



MONTHLY MEMBERSHIP PROGRESS REPORT

District 4 A1

Results as of: 03/31/2019

GMT: HOWARD HUDSON

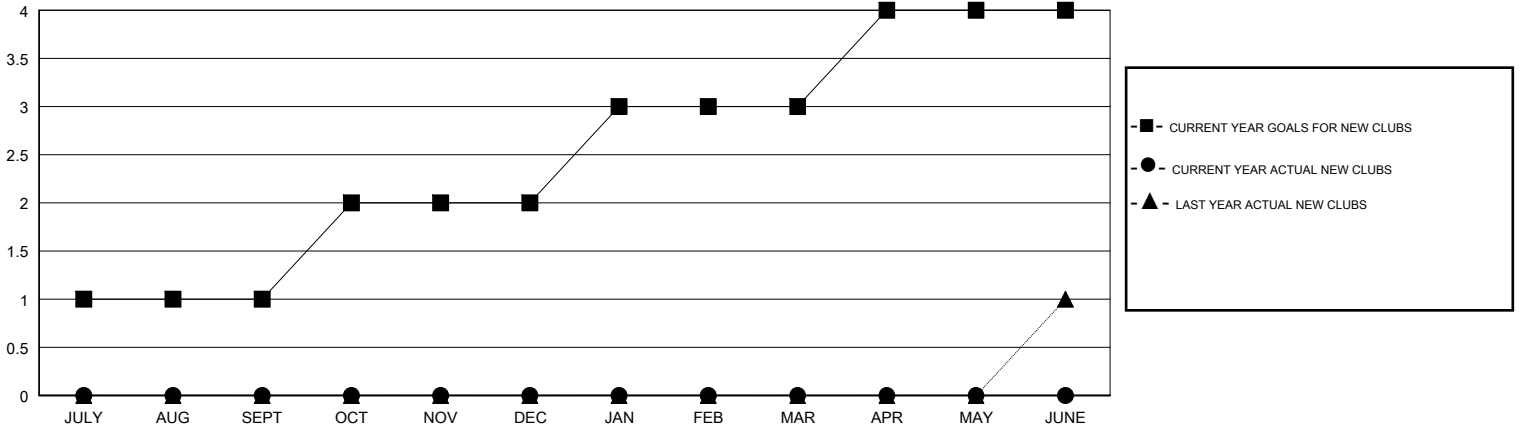
LOCATION CALIFORNIA

GMT CA

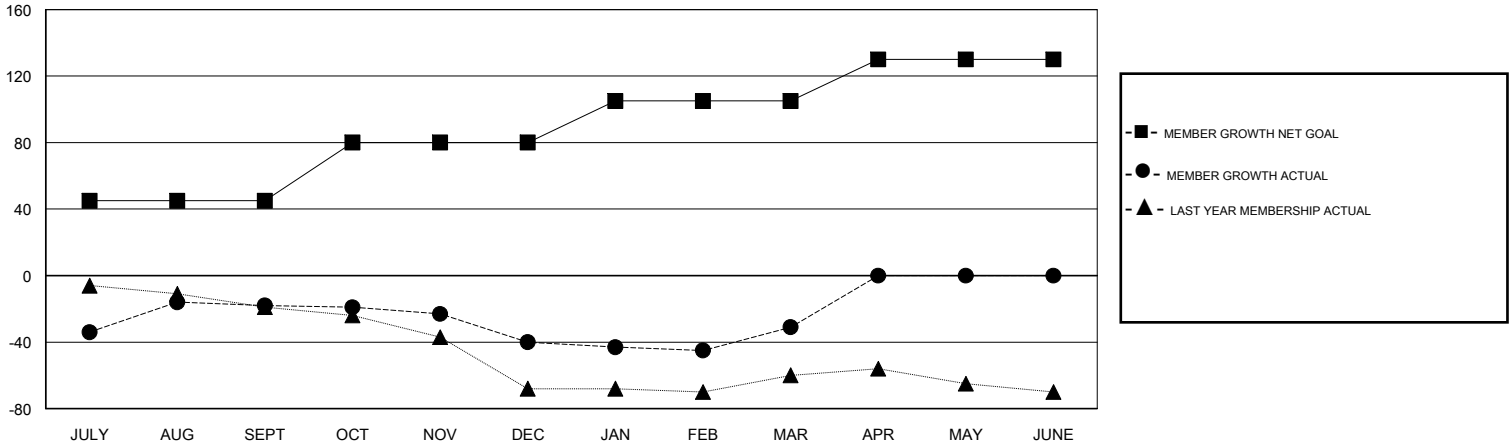
Clubs			
RESULTS FOR 2018-2019			
QUARTER	NEW CLUB GOAL	NEW CLUBS	DROPPED CLUBS
JULY/AUG/SEPT	1	0	0
OCT/NOV/DEC	1	0	0
JAN/FEB/MAR	1	0	0
APR/MAY/JUNE	1	0	0

Members			
RESULTS FOR 2018-2019			
QUARTER	MEMBER GROWTH NET GOAL	MEMBER GROWTH ACTUAL	DROPPED MEMBERS ACTUAL (including transfers)
JULY/AUG/SEPT	45	55	68
OCT/NOV/DEC	35	42	58
JAN/FEB/MAR	25	50	37
APR/MAY/JUNE	25	0	0

GOALS AND ACTUAL NEW CLUBS CUMULATIVE



GOALS AND ACTUAL MEMBERS CUMULATIVE



DROPPED CLUBS: 0

36 CLUBS OF 55 ADDED 1 OR MORE NEW MEMBERS

GENDER DISTRIBUTION	
MALE	1,551 (79.09%)
FEMALE	410 (20.91%)
Women Percentage Fiscal Year Goal: 25%	

DROPPED MEMBERS	
DECEASED	23
CLUB CANCELLED	0
OTHER	140
TOTAL	163

[CLICK HERE FOR CUMULATIVE MEMBERSHIP DATA](#)

TOTAL FAMILY UNIT MEMBERS	296
FAMILY MEMBERS PAYING HALF DUES	151